

KreaTeck®

Enterprise

POS Terminal
Installation & User Manual

www.kreateck.com



© 2004 Kreateck International Corporation. All rights Reserved.

Windows is a registered trademark of Microsoft Corporation. ELO is a registered trademark of ELO TOUCHSYSTEMS, Inc.. All other trademarks are the marks of their respective owners.

Kreateck International Corporation shall not be liable for technical or editorial errors or omissions contained herein. The Information is provided "as is" without warranty of any kind and is subject to change without notice.

P/N 2004030001 Revision A

Contents

Welcome..... 1

Installation..... 2

 Installing The POSTerm..... 2-1

Changing The Parameters..... 3

Welcome

This guide explains how to set up your hardware ,software and troubleshoot problems. For assistance contact Kreateck International Corp.

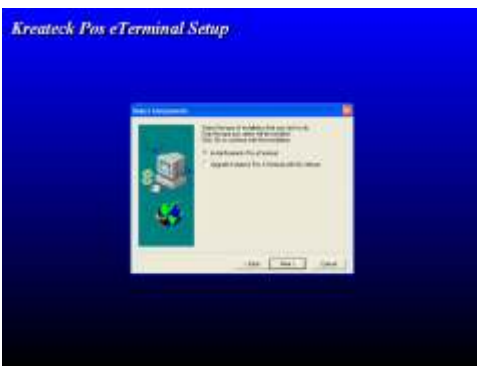
Let's get started !

Installation

Installing The POSTerm

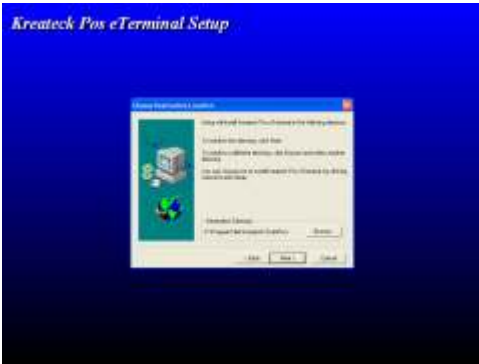
Place the **POSTerm** CD in your drive and wait for the setup program to start. Or you can download the program from the Kreateck

After the welcome screen, select **Next** to start the setup or **Cancel** to exit.

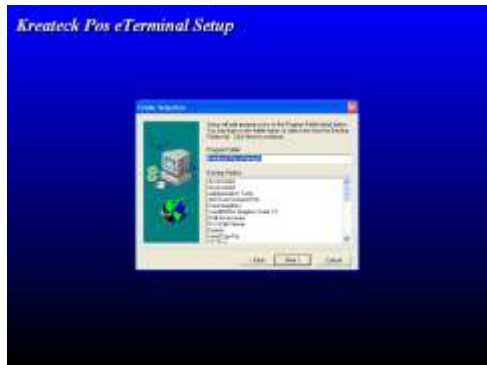


From the list of options select **Install Kreateck e-Terminal** and click **Next**.

Installation



Select the destination directory and click **Next**.

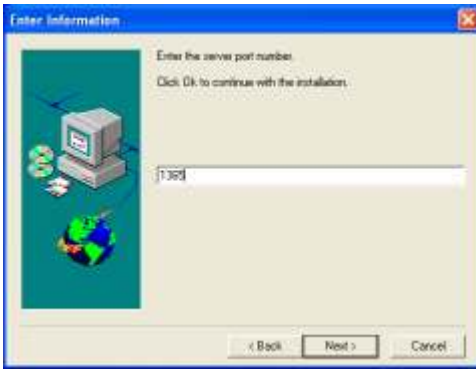


Select the program folder and click **Next**.



Enter the server IP number and click **Next**.

Installation



Enter the server port number and click **Next**.

Enter the work area and click **Next**.



Enter the application name and click **Next**.

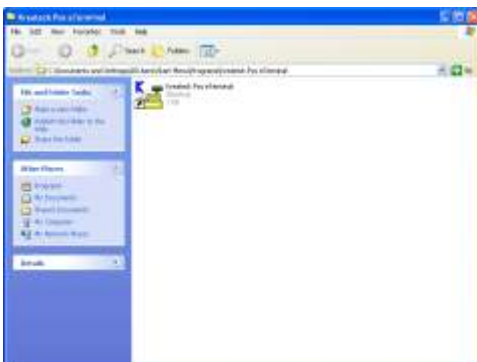
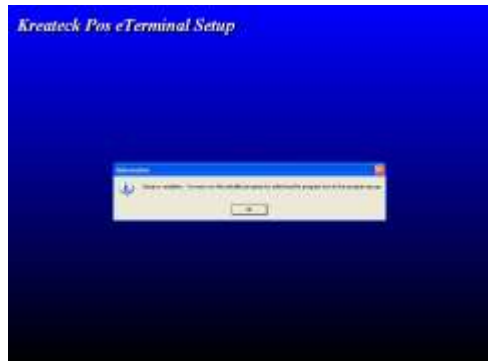


Installation



Wait until all the files are transferred to your system.

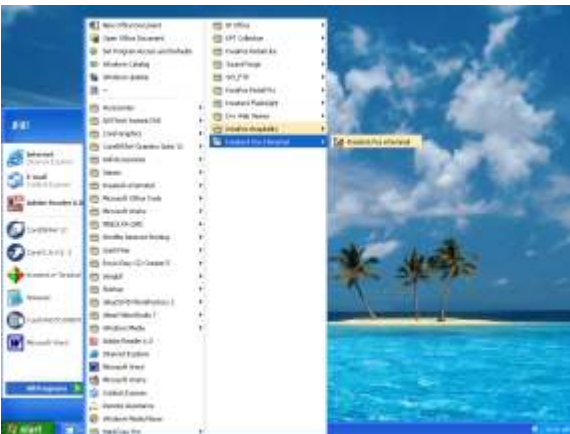
A messages will let you know that the installation has finished.



From the KreaPOS Folder double click on the KreaPOS Icon to start the application.

Changing The Parameters

If you need to change the address of your server, the port number or the application name in your shortcut.

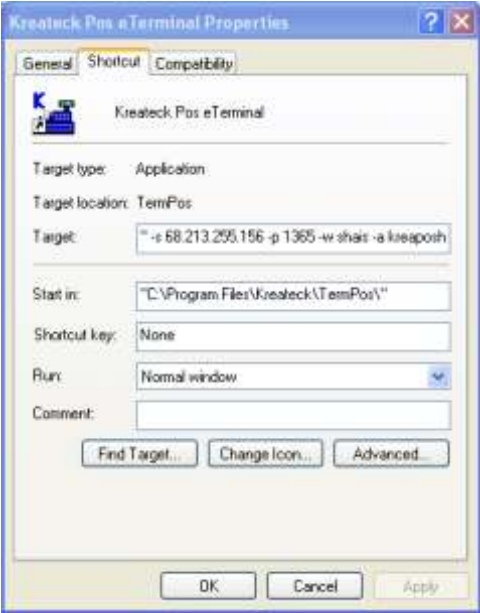


Search for your shortcut an right click on it.

From the list select properties.



Changing The Parameters



In the Target field you must change the parameters.

The parameters to be changed are:

- s (server)
- p (port number)
- w (work area)
- a (application name)

